



ParVal
Equipment Ltd.

Valve and Flow Control Specialists

**Supporting Industry
Since 1985**



www.parval.ca

Toll Free: 1-800-661-6958

Ph: (780) 437-2334

Fax: (780) 435-0411

#201 - 14207-128 A Ave Edmonton, Alberta

T5L 4P5

parval@telusplanet.net

KNIFE GATE VALVES

HIGH PERFORMANCE

PV57



CRN

ASSEMBLY WITH LOCKOUT
2" to 42" ANSI 150 lb.
Replaceable Seat

FULL BONNETED

PV57FB



CRN

2" to 42" ANSI 150 lb.
Live Loaded Packing
1100 Deg F - Metal or Resilient Seated

0-PORT

PV57 'O'



CRN

2" to 42" ANSI 150lb.
Full Port Thru Conduit Design
Replaceable Seat
Full Packing Gland/Safety Lock Outs
Recycle Trash Seat Design

KNIFE GATE SPECIFICATIONS

MATERIALS OF CONSTRUCTION:

BODY/GATE: 317SS, WCB, 316SS, Inconel, Monel, Hastelloy etc.

SEAT: Metal, Teflon, EPDM, Viton, Buna-N, Neoprene, Polyurethane, Aflas, Kalrez and Hypalon

ACTUATION: Handwheel, Gear Operators, Chainwheel, Lever, Ratchet, Square Operating Nut, Double Acting Pneumatic, Pneumatic Fail Open / Fail Closed, Hydraulic, Electric

INSTRUMENTATION: Packages Available

SPECIAL OPTIONS: Deflection Cones, V Port, O Port, Live Loaded, Purge Ports, Lock Outs, HardFacing, Coatings, Flanges, High Temp, Square and Rectangular Ports, Steam Jacketed

PV55



CRN

2" to 72"
ANSI 150 - 600

PV55



CRN

2" to 72"
ANSI 150 - 600

PACKINGLESS KNIFE GATE VALVES

PV MDC



WAFER

2" to 42"
ANSI 150

SPECIFICATIONS

MATERIALS OF CONSTRUCTION:

BODY: Cast Iron or 316 SS

ELASTOMER SLEEVES: Gum Rubber, Nitrile, Viton, Chlorobutyl, Hypalon, Polyurethane, EPDM

GATE: 316SS L with optional Coatings Available

ACTUATION: Handwheel, Gear Operators, Chainwheel, Lever, Ratchet, Square Operating Nut, Double Acting Pneumatic, Pneumatic Fail Open / Fail Closed, Hydraulic, Electric

INSTRUMENTATION: Positioners and Control Systems, Solenoid Valves, Limit Switches and Fail Safe Control Systems.

Double Seat design for heavy duty bi-directional slurry service.

PV MD



FULL BODY

2" to 42"
ANSI 150

BUTTERFLY VALVES

HIGH PERFORMANCE

HP-BFV



CRN

2-1/2" to 36" ANSI 150 & 300
Metal or Soft Seated

TEFLON LINED & DISC

TL-BFV

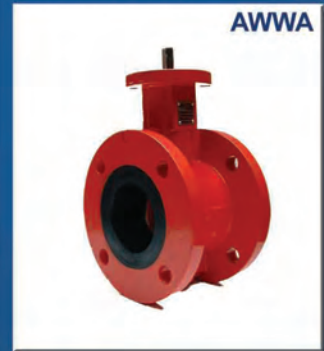


CRN

2" TO 24" ANSI 150
Teflon Coated Disc
& Teflon Lined

AWWA BUTTERFLY VALVE

AWWA



2" to 72" ANSI 125/150
per AWWA C504 SPEC

WAFER BUTTERFLY VALVE

W-BFV



CRN

2" to 24" ANSI 150

BUTTERFLY VALVE OPTIONS

STYLE:

Lug or Wafer

MATERIALS OF CONSTRUCTION:

Carbon Steel, SS, Nickel, Aluminium
Bronze, Alloy 20, Monel, Hastelloy C,
Cast Iron

SEAT MATERIALS:

Metal, Teflon Lined, EPDM, Buna N,
Others Available

ACCUATION:

Lever, Handwheel, Gear Op.,
Pneumatic, Pneumatic w/ Spring
Return, Hydraulic, Electric

INSTRUMENTATION:

Positioning Systems, Limit Switches, etc.

LUG BUTTERFLY VALVE

L-BFV



CRN

2" TO 24" ANSI 150

EXPANSION JOINTS



1" to 96"
45, 90, 180 Degree, T
& Tapered Configurations

EXPANSION JOINTS

Standard and Multiple Arch
Vibration Isolation Rods
Multiple Elastomere Materials
Optional Teflon Lined
Round or Rectangular

PINCH & DIAPHRAGM VALVES

BODY: Plastic (PVC, PP, PVDF etc.)
Metal (Iron, Carbon Steel, SS,
Monel, Hastelloy C etc.)

LINER/SLEEVE: Plastic (PVC, PP,
PVDF etc.) Rubber (Neoprene,
Hypalon, Soft & Hard Natural,
Graphite etc.), Glass Lined

PINCH & DIAPHRAGM VALVES



1/2" to 24" ANSI 125/150

PLUG VALVES

CHEMICAL PLUG VALVE

PV-CP



CRN

1/2" to 14"
ANSI 150 & 300

ECCENTRIC

AWWA C504



CRN

2" to 72" ANSI 125
Resilient Coated Plug
Welded Nickel Seat

SELF ALIGNING

PV-PS



CRN

1/2" to 6" ANSI 150 & 300
Bi-Directional, 2-Way & 3-Way
Top Entry Design
Bolt-On, Partial and Full Jacketed

CSA/CGA PLUG VALVE

PV-CGA



CRN

CSA, UL & FMA Listed
1/2" to 8"
200 Lb. WOG

PLUG VALVE OPTIONS

MATERIAL: Cast Iron, WCB, Stainless Steels, Alloy 20, Monel, Hastelloy C etc.

PLUG & SEAT MATERIAL: Metal, Nickel Plated, PTFE, RPTFE, Polyethylene, Glass Filled TFE, Carbon Graphite etc.

JACKETING: Bolt-On, Partial & Full

ACTUATION: Pneumatic, Pneumatic w/ Spring, Electric, Hydraulic and Hand Operated.

- 2-Way & 3-Way
- Fire Safe
- Double Block and Bleed
- Well Test Block
- Nace Compliant

ASPHALT PLUG VALVE

PV-ASPHALT



CRN

1/2" to 14"
Steam Jacketed

BALL VALVES

TRANSMITTER ISOLATION VALVE



1/4 Turn Bubble-Tight Shutoff
Full Diameter Diaphragm Sensing Area
Closed Position Locking Device

BALL VALVE OPTIONS

PORT: Full, Reduced and Regular

END CONNECTIONS: NPT, Flanged, SW, BW, Sanitary

MATERIALS OF CONSTRUCTION:
BODY/BALL: 316SS, Alloy 20, Monel, WCB

STEM SEAL: Teflon, Graphoil, Others available

SEAT: Teflon, RPTFE, Others available

ACTUATION: Handwheel, Gear Operators, Lever, Square Operating Nut, Double Acting Pneumatic, Pneumatic Fail Open / Fail Closed, Electric

INSTRUMENTATION:
Positioners and Control Systems, Solenoid Valves, Limit Switches and Fail Safe Control Systems.

BALL VALVE



CRN/CGA

2-WAY & 3-WAY
Size: 1/4" to 12"
ANSI 150 - 1500

CONTROL VALVES

SEVERE SERVICE CONTROL VALVE



CRN

HIGH PERFORMANCE
2" to 42" ANSI 150-4500
Replaceable Seat

Zero Leakage Metal to Metal Seat Exceeds ANSI Class VI Shutoff

CONTROL VALVE SPECIFICATIONS

1/2" to 16"
ANSI 150 to 4500

Materials of Construction
Cast Iron, SS, Chrome Moly, Carbon Steel, Cast Bronze

Applications
Balanced or Unbalanced plug
Angle or globe patterns
Steam, Gases, Water and Other Liquids
3-way Diverting and Mixing

Actuation
Diaphragm, Pneumatic, Pneumatic with fail Open/Closed,
Pneumatic Piston, Electric, Electro-Hydraulic

Instrumentation
Electro-Pneumatic Controllers, Positioners, Air
Regulators, Pneumatic Controllers and Custom
Instrumentation Packages

ROTARY CONTROL VALVE



CRN

1" to 8" ANSI 150 to 600
Steam, Gases, Water & Liquids
(Corrosive, Dirty or Erosive/Abrasive Slurries)
Metal to Metal or Soft Seating

ON/OFF VALVES

SOLENOID ACTUATED



CRN

1/2" to 8" ANSI 150 or 300
Carbon Steel or Stainless Steel

ON/OFF VALVE SPECS

Rotary Solenoid Valves

- 1/2" to 6" ANSI 150 & 300
- Solenoid Components Isolated from Process Fluid
- Nema 4X & Explosion Proof Enclosure
- 2-Way, 3-Way
- Positions: Normally Closed, Energize to Open or Normally Open Energize to close
- Manually Reset, Emergency Shut Off Valve or Emergency Discharge Valve

Heat Actuated Valves

- 1/2" to 8" ANSI 150 -600
- Heat Actuated Fusible Link Actuator with Manual Override

Applications
Steam, Gases, Water, Oil or other Liquids
(Including Dirty, Viscous, Corrosive & Explosive medias)
High Temperature Applications

HEAT ACTUATED FUSABLE LINK



CRN

Actuator with Manual Override
1/2" to 8" ANSI 150 or 300
Carbon Steel or Stainless Steel

REGULATING VALVES

PRESSURE REDUCING



CRN

1/2" to 4"
ANSI 150 to 600

REGULATING VALVE SPECIFICATIONS

Pressure Reducing Valves

- Steam, Gases and Liquids
- Carbon Steel, Cast Iron, Bronze, SS
- Air Operated, Pilot Operated, Internal Pilot Pistons

Temperature Regulators

- Steam, Gases and Liquids
- Carbon Steel, Cast Iron, Bronze
- Internal Pilot Operated Ideal for Cooling and Heating
- Liquid Filled Thermo-Elements for 70 to 400 DegF

TEMPERATURE REGULATORS



CRN

1/2" to 4"
ANSI 150 to 300

FLOW METERS

VARIABLE AREA FLOW INDICATOR



1/4" to 8" NPT, Flanged, SW,
Sanitary or Victaulic
1 to 1200 GPM or 3 to 4500 LPM or
10 SCFH to 10,000 SCFM

VARIABLE FLOW METER OPTIONS

Materials: Brass, 316SS, Cast Iron, Aluminum, Carbon Steel, PVC or Teflon with 316L SS or Tantalum Materials

- Spring Loaded Mechanical Design Mounts in any Orientation
- Low Pressure Drop
- Pressure up to 2000 psig
- Field Adjustable Switches for Hazardous and Non-Hazardous Locations
- Optional 4-20 mA Transmitter

Applications: Lubricating Oil, Glycol, Water, Air, Gasses, Chemicals

VARIABLE AREA FLOW INDICATOR



1/4" to 8" NPT, Flanged, SW,
Sanitary or Victaulic
1 to 1200 GPM or 3 to 4500 LPM or
10 SCFH to 10,000 SCFM

TURBINE METER



1/2" to 2"- 10 to 200 GPM
Aluminum, Brass, SS, Nylon or PVC Digital
Display of Rate, Total or Both Battery Pwr.
Outputs: Pulse or 4-20mA

FLOW SWITCH



1/2" to 6"- up to 4500 psig
Weatherproof and Explosion Proof
Brass or 316 SS
Vertical or Horizontal Mount

INSIGHT FLOW METER



1/2" to 1-1/2"
Max Flow: 3 to 50 GPM
PVC and Polysulfone Tube Material
Connection: SS, Brass, 316SS

MASS FLOW



Air & Gasses .5 SCCM to 3000 SCFH
Open Collector Contacts, RS,
5VDC or 4-20mA for Flow/Temperature or
Flow/Pressure

OTHER FLOW METERS AVAILABLE

Sight Flow Meters
High Pressure/Temperature Flow
Meters
Paddle Wheel
Impeller
Positive Displacement Meters
Mass Flow Meters Magnetic Flow
Meters
Flow Rate Indicators
Rotameters
Ultra Sonic
Vortex Shedding
Venturi Meters

DISPLAY & ALARM RECEIVERS



Remote & Electronic
Flow Rate Indicators/Totalizer/ Batch
Controller/Chart Recorders

FLOW SENSORS & PEMS

OPTICAL FLOW SENSOR



OFS

SPECIFICATIONS

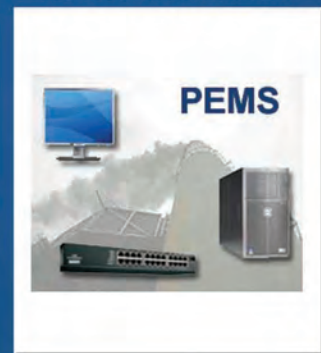
OPTICAL FLOW SENSORS

- Method of Measurement: Optical Scintillation
- Application: Flare Stack, Combustion Air and Gas Flow
- Light Source: LED
- Range: 0.03 to 100 m/sec bidirectional
- Accuracy and Repeatability: +/- 0.01 m/sec
- Stack / Duct / Pipe Diameter: 0.3 to 10 m
- Media Transparency: Up to 95% opacity

PREDICTIVE EMISSIONS MONITORING SYSTEM

- Gas & Liquid Fired Turbines & Boilers
- Gas Fired Ethanol Plant Boilers
- Petroleum Refinery Processes
- Other Continuous Systems
- Certified & Cost Effective Alternative to CEMS
- High Accuracy
- Superior Reliability

PREDICTIVE EMISSIONS MONITORING SYSTEM



PEMS

INSTANTANEOUS HOT WATER HEATERS



CRN

ASME

Domestic Hot Water, Hospitals, Dormitories, Safety Showers & Shower Systems
Booster Heat & Building Heat

OTHER PRODUCTS

INSTANTANEOUS HOT WATER HEATERS

- Instant Hot Water, with No Storage Tank
- Accurate to 3 Deg F
- Compact in size fits through Standard Doorway
- Fully Assembled including Heat Exchanger, 3 way Blending Valve and all Strainers, Traps,
- Pressure and Temp Gauges
- Up to 330 GPM

HEAT EXCHANGERS

- Shell & Tube, Plate & Frame
- Shell & Coil, Straight & U-Tube, Brazed Plate,
- Double Wall, Titanium Heat Exchangers
- Custom Manufactured to End Users Specifications
- ASME and CRN Certified

HEAT EXCHANGERS



CRN

ASME

Custom Manufactured to Customer Specifications

PRESSURE ISOLATION RING



1" to 20"

Housing / Flange: Carbon Steel, 316 SS, etc.
Inner Flexible Wall: Buna N, Teflon, Silicone, Viton, Natural Rubber

PRESSURE & SAFETY RELIEF VALVES



CRN

ASME

1/2" to 6"

ASME

Media: Hot Water, Steam, Air, Gas, Vapours
Vacuum Relief

RUPTURE DISCS & VENT PANELS



CRN

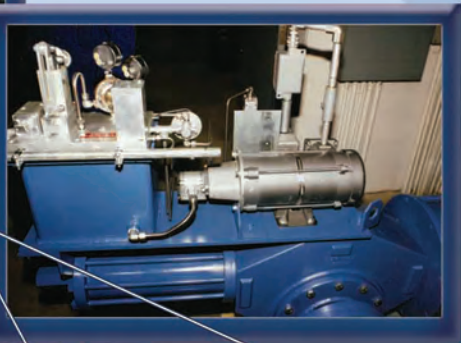
ASME

1/2" to 24"

ANSI 150 to 600

Fragmenting and Non-Fragmenting
Design Materials: Carbon Steel, 316 SS, Hasteloy C, Graphite

Highlights...



270 Flow
Meters &
Counting
for Mining
Application



24" 300 ANSI High Performance Butterfly Valve
With 3 Phase Electric Over Hydraulic,
Fail Safe (Spring Return) Actuation
with Manual Hydraulic Override.

Options Included:
Speed Controls, Position Switches &
Local/Remote Operation.

**Bonneted Knife Gate Valves
with Electric Actuation for
Petrochemical
Industry**



**20" Knife Gate Valve
Used in the
Oil Sands**

Valves Regularly Stocked



Flow Meters Regularly Stocked



www.parval.ca

Toll Free: 1-800-661-6958

Ph: (780) 437-2334
parval@telusplanet.net

Fax: (780) 435-0411